

drylin® SHT | Linear modules | Product range

Standard

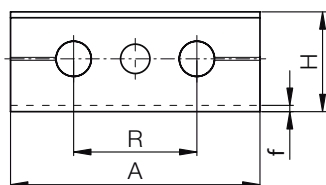
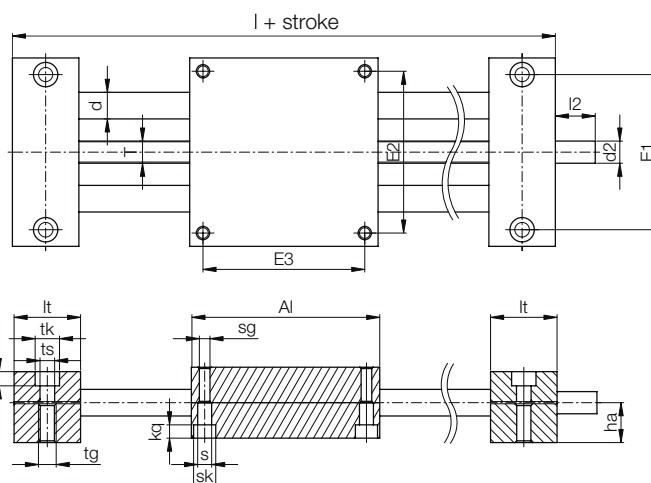


- Solid design
- Various materials for shaft and lead screw
- Maintenance-free and optionally corrosion resistant
- Tr10x2, Tr18x4, Tr24x5
- Temperature resistant up to +60 °C
- Available accessories
 - Page 1303
- Lead screw nuts are available separately ► Page 1148
- Available with motor
 - Page 1261



Order key
complete ► Page 1192

SHT-12-AWM



red dot design award
winner 2006

Technical data

Part No.	Max. stroke length [mm]	Aluminium shaft		Steel shaft		Max. static load capacity	
		Weight	Additional (per 100 mm)	Weight	Additional (per 100 mm)	axial	radial
		[kg]	[kg]	[kg]	[kg]	[N]	[N]
SHT-12-AWM	750	1.1	0.1	1.3	0.2	700	2,800
SHT-20-AWM	1,000	3.2	0.3	3.9	0.6	1,600	6,400
SHT-30-AWM	1,250	8.6	0.6	10.9	1.4	2,500	10,000

Dimensions [mm]

Part No.	A	Al	H	E1	E2	E3	I	R	f	lt	tk	ts
	-0.3	-0.3		±0.15	±0.15	±0.15						
SHT-12-AWM	85	85	34	70	73	73	145	42	2	30	11	6.6
SHT-20-AWM	130	130	48	108	115	115	202	72	2	36	15	9.0
SHT-30-AWM	180	180	68	150	158	158	280	96	4	50	20	13.5

Part No.	tg	kt	s	sk	sg	kq	d	T	l2	d2	ha
		±0.1								Standard	
SHT-12-AWM	M8	6.4	6.3	10	M6	6.0	12	Tr10x2	17	Tr10x2 ⁹²⁾	18
SHT-20-AWM	M10	8.6	6.4	11	M8	7.0	20	Tr18x4	26	12h9	23
SHT-30-AWM	M16	12.6	11.0	18	M12	10.6	30	Tr24x5	38	14h9	36

⁹²⁾ Lead screw end unmachined